



niek.klazinga@oecd.org

Research to support OECD's agenda on audit and feedback in health care systems. Amsterdam, May 23 2019





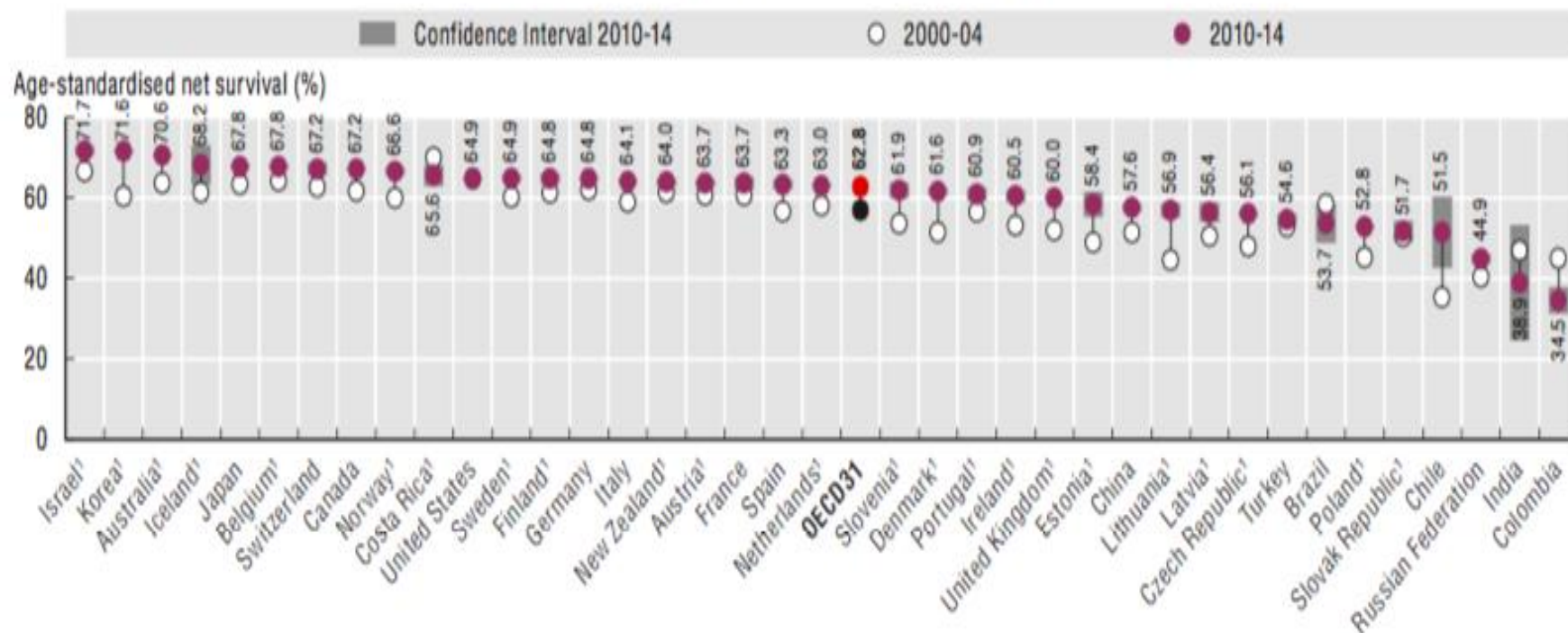
Information produced by the OECD

- Health at a Glance: international comparative performance intelligence on effectiveness, safety, patient-centeredness, costs, access, efficiency and equity of health care systems
- www.oecd.org
- Analytical reports
- Policy briefs/country specific studies to feed the governmental policy processes



Quality indicators on cancer care

6.36. Colon cancer five-year net survival, 2000-04 and 2010-14



Note: 95% confidence intervals have been calculated for all countries, represented by grey areas. Expected updates in the data may reduce the survival estimate for Chile to 43.9, and may also reduce the estimate for Costa Rica. Updates may also lead to very small changes in the survival estimates for Canada and for the OECD average.

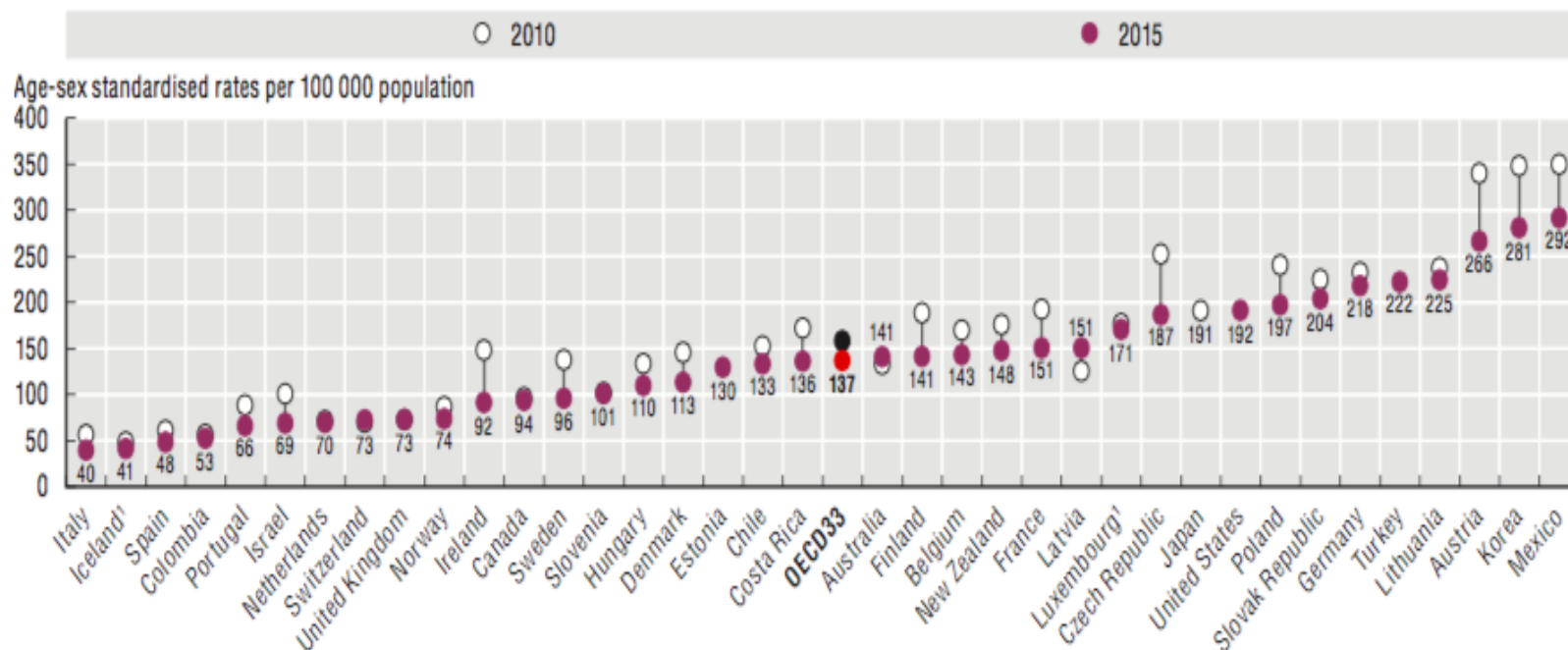
¹ Data with 100% coverage of the national population.

Source: CONCORD programme, London School of Hygiene and Tropical Medicine.




Quality indicators on primary care

6.11. Diabetes hospital admission in adults, 2010 and 2015 (or nearest year)

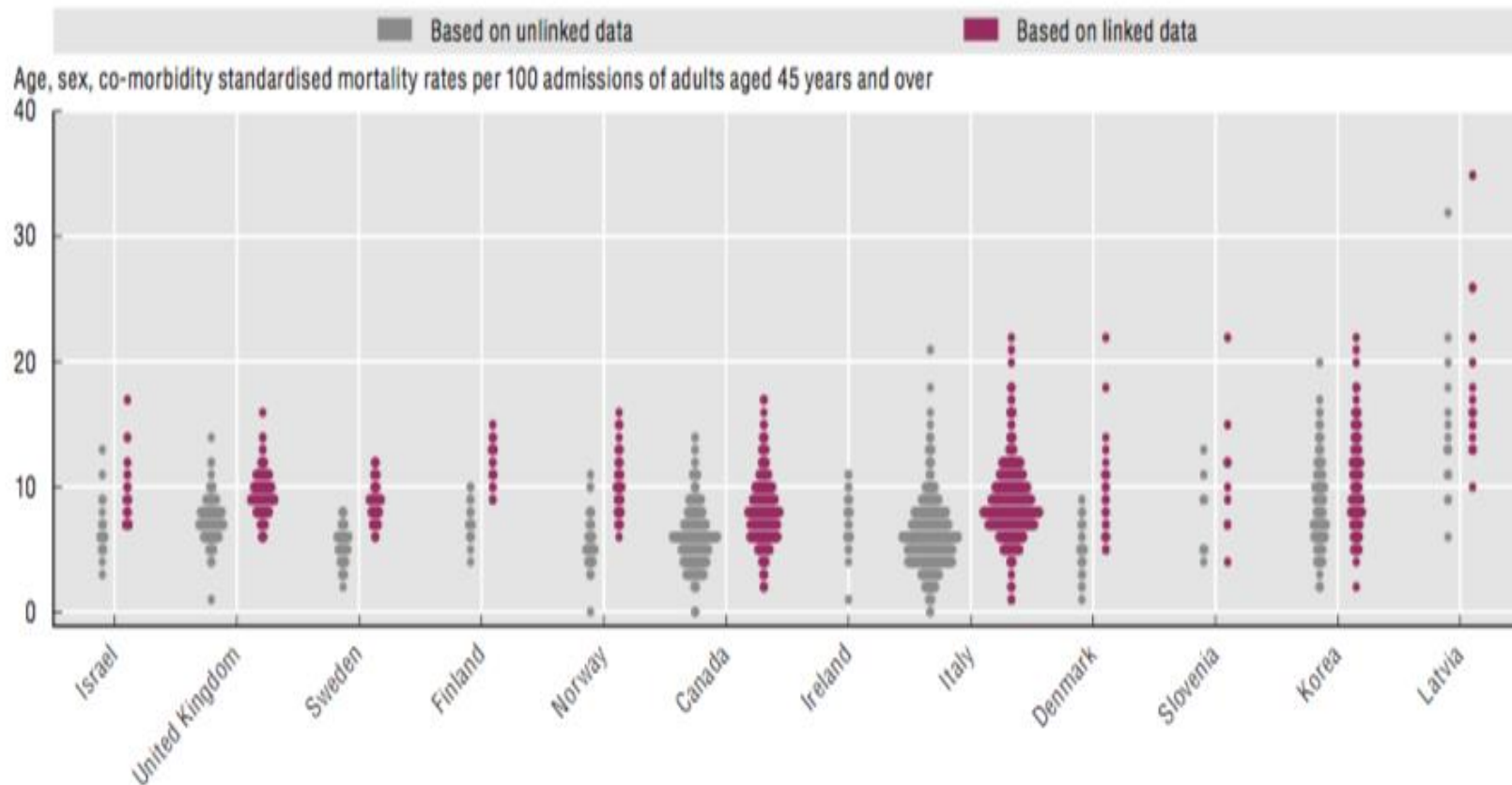


1. Three-year average.

Source: OECD Health Statistics 2017.

StatLink  <http://dx.doi.org/10.1787/888933603545>

6.21. Thirty-day mortality after admission to hospital for AMI based on linked and unlinked data, 2013-2015 (or nearest years)



Note: The width of each line in the figure represents the number of hospitals (frequency) with the corresponding rate. Data for Canada not linked to death statistics. UK data are limited to England and presented at trust level (i.e. multiple hospitals). Ordered by inter quartile range of admission-based data. Rates based on linked data are also standardised for previous AMI.

Source: OECD Hospital Performance Data Collection 2017.



Strategic directions OECD on health care and how research on audit and feedback can help

- Increasing the actionability of reported intelligence/performance indicators
- Improving ways of reporting
- Support countries in strengthening their national information infrastructure
- Knowledge based learning health care systems
- Strengthening patient values in measurement and feedback (PROMS/PREMS)



niek.klazinga@oecd.org

