

## CENTRE FOR IMPLEMENTATION RESEARCH LAUNCH

# IMPROVING OPERATING ROOM PRACTICE WITH THE OR BLACK BOX

DRS. SYLVAIN BOET & NICOLE ETHERINGTON

JANUARY 19, 2018



**The Ottawa  
Hospital**

RESEARCH  
INSTITUTE

**L'Hôpital  
d'Ottawa**

INSTITUT DE  
RECHERCHE



# OPERATING ROOM BLACK BOX

---



Dr. Teodor Grantcharov  
St Michael's Hospital

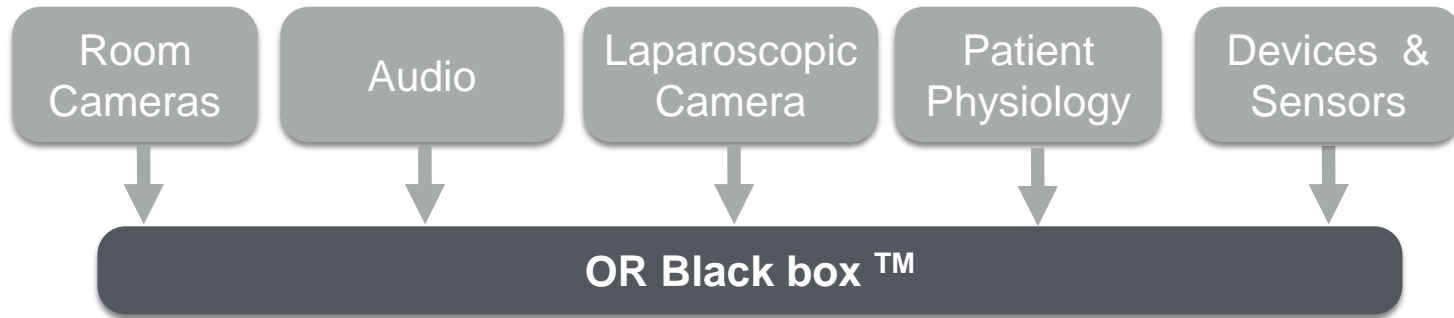
# OR Black Box



- Record audio/video/digital data from the OR
- Understand factors that may influence outcomes
- Develop targeted QI interventions/policy changes based on local needs



# Content acquisition



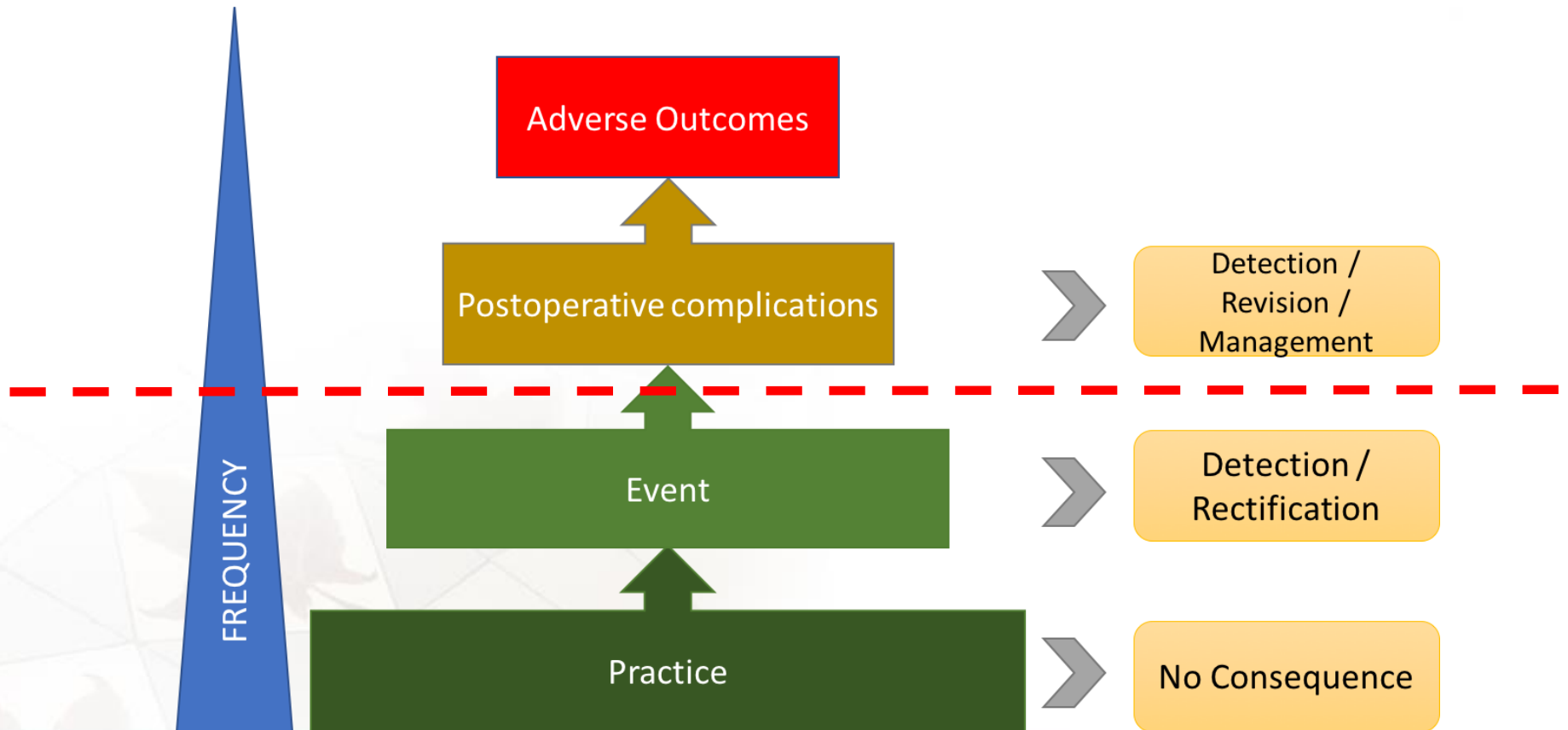
# Performance analysis in other industries



- Black box: **everyday** vs. disaster
- **Confidential** and **non-punitive** process
- **Pro-active** & **systematic** approach to risk and practice



# Practice – Event – Outcome Framework





# Performance analysis in other industries



- Black box: **everyday** vs. disaster
- **Confidential** and **non-punitive** process
- **Pro-active** & **systematic** approach to risk and practice



# Analytics and reporting

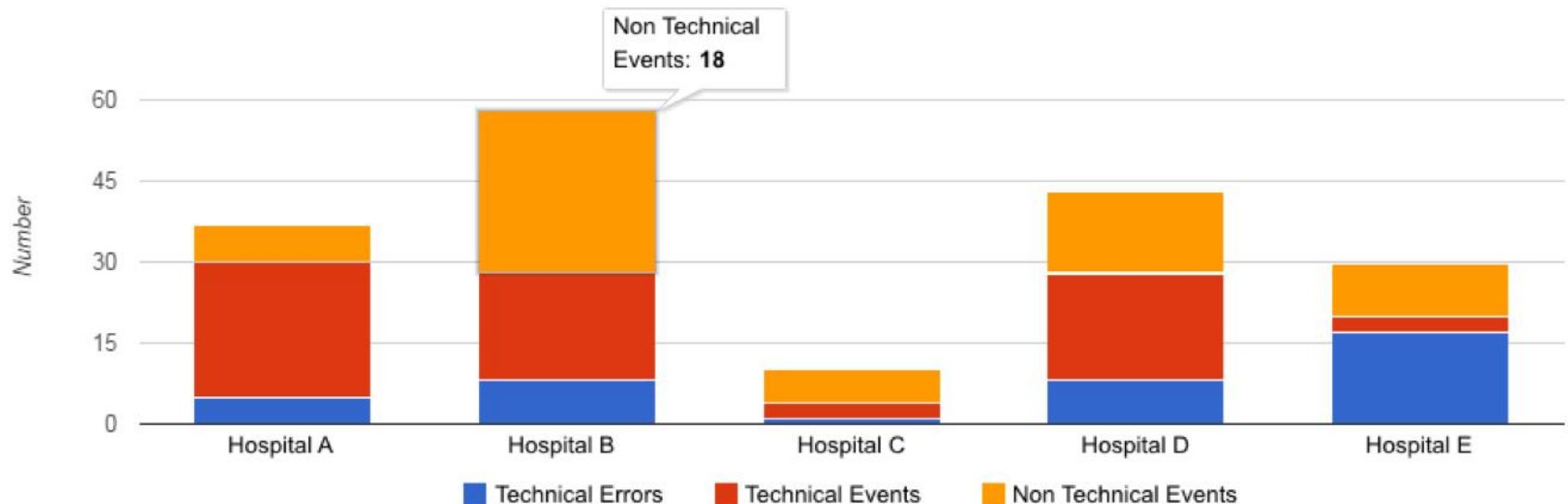


## Regional Comparative Analysis

Region: North East ▼ Division: General Surgery ▼

Procedure Type: All ▼ Year: 2014 ▼ Month: October ▼

Procedure Type dropdown menu options:  
All  
Laparoscopic 2D  
Laparoscopic 3D  
Open  
Robotic



uOttawa



# Privacy



- Highly sensitive data: patients, care providers
- Lessons learned from Air Canada
- Protecting information and individuals:
  - IT
  - Consent
  - Analysts: small number of well trained individuals



## INITIAL RESULTS

---

### EXPLORING STAKEHOLDER PERCEPTIONS

- ▶ 15 patients: “no brainer” for patient safety
- ▶ 9 clinicians: need for information but mostly supportive
- ▶ 10 senior leadership: fits with TOH environment (“just culture”)
- ▶ Next steps:
  - Finish clinician interviews
  - Data analysis to inform implementation and future projects

# FUTURE STUDIES

---

- ▶ Teamwork
- ▶ Closed-loop communication



# Key points



- ❑ OR black box targets clinical practice
- ❑ Systematic and proactive
- ❑ Everyday practice
- ❑ Needs assessment
- ❑ Tailor QI to improve care



# DISCUSSION

---



Illustration by Bruno Mangyoku